

# The Secrets of Witches

TOUR BOOKLET

# Introduction

Hi! My name is Agatha, and this is my familiar, Nova!

I'm a witch... well, not officially yet, since I'm still in school and have to pass my final exam.

To get ready for my exam, I have to review every aspect of witchcraft. I have to know its history, both distant and more recent, its plants, animals, crystals, and all the objects used in divination and protective spells.



A FAMILIAR IS AN ANIMAL THAT LIVES NEAR HUMANS. FOR WITCHES, THEY WERE ANIMALS WE TURNED TO FOR ADVICE OR FAVOURS.

WANT TO STUDY WITH ME AND HELP ME WITH MY FINAL EXAM? LET'S GO! DIVE WITH ME INTO THE WORLD OF WITCHES. DON'T FORGET YOUR PROTECTIVE AMULET, YOUR HAT, AND ESPECIALLY NOT NOVA!

MEOOOOOW!



# 1. What is a witch, anyway?



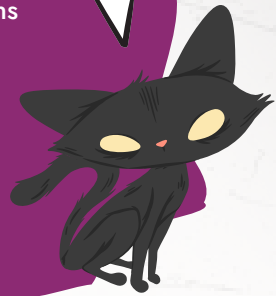
WERE YOU SCARED WHEN  
I TOLD YOU I WAS A WITCH?  
SURPRISED?

Different people imagine different things when it comes to witches. What do you think a witch is? Select from among the following choices of what a witch is for you.

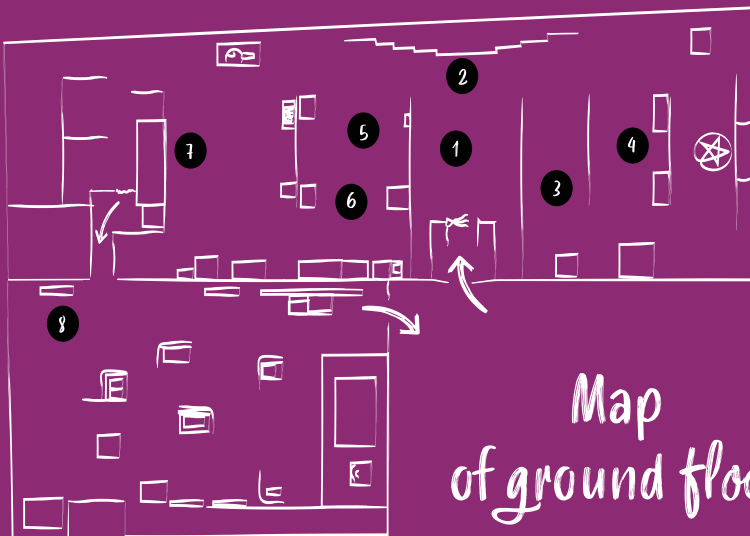
## A witch is a person who:

- Is associated with evil
- Has supernatural powers
- Understands the natural world to concoct potions
- Is ugly and mean
- Is sinister
- Is mysterious
- Practices magic
- Is rebellious and unconventional
- Has reappropriated female power, intuition, and knowhow
- Is seductive

PSST. YOU CAN  
SELECT AS MANY  
AS YOU WANT.



How many did you check off? One? Five? All? Believe it or not, depending on the person and time in history, any of these responses would have been accurate. Just wait! You'll see that the figure of the witch has changed so much over time!

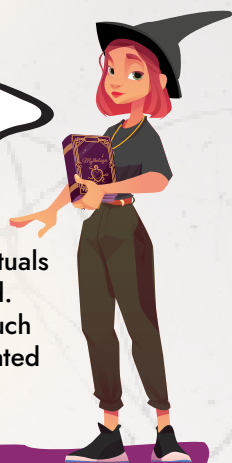


Map  
of ground floor

## 2. Witches through time

Witches have appeared in art, literature, mythology, and history from Antiquity—as early as 800 years before the common era.

MYTHOLOGY MEANS THE MYTHS, BELIEFS, OR LEGENDS OF A PEOPLE. THESE ACCOUNTS EXPLAIN VARIOUS ASPECTS OF THE WORLD AND LIFE, AND THEY FEATURE VARIOUS GODS AND MAGICAL CREATURES.



In Antiquity, some goddesses practice magic rituals or communicated with the world of the dead.

In daily life, the expertise of certain women such as healers, midwives, or herbalists was associated with witchcraft.

Look at the timeline in the exhibition and notice how the figure of the witch has changed over time.

Place these witches, or supposed witches, in chronological order.



1. Anna Göldin
2. Circe
3. Doreen Valiente
4. Marie-Josephte Corriveau

HAD YOU HEARD OF ANY OF THESE WOMEN BEFORE?



### 3. The spread of witch hunting

NOVA AND I  
WILL BE RIGHT  
THERE WITH YOU.

When we think of witches, we often think of witch hunts. Even though it was a tragic moment in our history, I hope you'll learn about this time with me. You have to know your history to be a real witch!

Witch hunts in Europe were at their peak in the 16<sup>th</sup> and 17<sup>th</sup> centuries, and women were the main targets. Prejudices spread widely among the populace, and accusations of witchcraft were very common.

To understand the scope of witch hunts, shade in the countries on this map that had major witch trials.

MEOOWW



Extent of witch hunting in Europe  
Map inspired by <https://www.history.com/news/witch-hunts>  
© 2018, All rights reserved.

## 4. Protection against magic and witchcraft

Most people were terrified by witches and magic. To protect themselves from supposed spells, they would confer protective powers on various everyday objects. Which of the following objects supposedly protected children from witchcraft and misfortune?



## 5. The powers of witches

Witches were said to have many magical abilities.



Look closely at this image. It illustrates several powers witches were said to possess. Which ones can you spot? Select from among the following responses:

- Flying on a broom
- Becoming invisible
- Unleashing natural elements such as fire, rain, and hail
- Revealing hidden items
- Communicating with the world of the dead
- Transforming into animals
- Using spells and charms

PURRRRR



IF YOU HAD THE POWER TO TRANSFORM INTO AN ANIMAL, WHICH WOULD YOU CHOOSE? I'D BECOME A CAT SO I COULD TALK TO NOYA!



## 6. Witches at your service



Many of the women accused of witchcraft were midwives, herbalists, and healers. A deep knowledge of plants and their medicinal uses is a requirement of all three practices. Now it's your turn to explore these various natural ingredients by finding the names of 12 plants and mushrooms in this word search puzzle.



P.S.:  
A MIDWIFE IS  
SOMEONE WHO  
HELPS WOMEN  
GIVE BIRTH.

**Aconite Agaric (x2) Nightshade  
Stinkhorn Flax Poppy Almond  
Bryony Webcap Mandrake Licorice**

Z	R	Y	O	A	G	A	R	I	C	W	W	X	P
Z	J	P	K	X	I	R	H	G	L	I	S	S	E
S	B	R	Y	O	N	Y	F	C	W	M	H	S	L
B	N	N	I	G	H	T	S	H	A	D	E	T	H
N	K	F	V	W	Z	A	C	O	N	I	T	E	N
M	A	N	D	R	A	K	E	R	E	K	E	B	W
Y	H	L	K	S	T	I	N	K	H	O	R	N	X
T	M	I	Q	W	E	B	C	A	P	E	D	X	N
Y	F	H	P	O	P	P	Y	I	N	Z	E	N	P
Q	X	L	I	C	O	R	I	C	E	A	X	Z	N
T	B	E	L	L	A	A	G	A	R	I	C	C	V
A	L	M	O	N	D	E	K	M	C	O	X	I	W
K	F	C	O	R	T	I	F	L	A	X	E	O	M
O	W	N	V	P	C	L	A	T	H	R	E	I	R

# 7. A witch's bestiary



AS WE SAW EARLIER,  
IT WAS ALSO THOUGHT THAT  
WITCHES COULD SHAPESHIFT  
INTO ANIMALS!

PURRRR



Some animals are associated with witches. These animals are often seen as mysterious or live in dark forests.

Discover these animals and their supposed powers. Match the statements with the correct animals



1. I AM AN INTERMEDIARY  
BETWEEN WORLDS.

2. I CAN WARD  
OFF BAD LUCK

3. I AM LORD  
OF THE FOREST

4. I AM SO CUNNING AND DECEITFUL  
THAT I COULD BE A DEMON

5. I AM A MESSENGER

6. MY SKIN AND BLOOD  
CAN BE USED IN MAGIC POTIONS





## 8. Who were these witches?

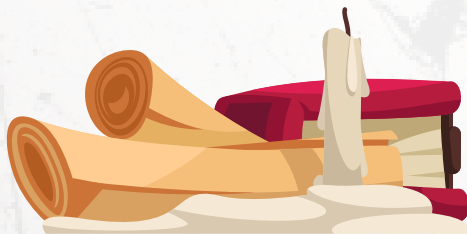
The women accused of witchcraft did not call themselves witches. Women who held traditional knowledge, older women, widows, and women who were simply different – all of them might be accused of witchcraft. So witches had many faces!



If you had lived in Europe in the 16<sup>th</sup> century, would you have been suspected of witchcraft?

Answer the questions below to find out!

- 1. HOW DO YOU DRESS?**
  - a. I don't pay attention to social conventions in my dress.
  - b. I dress according to the latest fashion.
  - c. I always wear black.
  - d. Orange is my favourite colour.
  - e. I dress like everyone else.
- 2. WHAT DO YOU ENJOY DOING THE MOST?**
  - a. Reading.
  - b. Watching television.
  - c. Singing and playing a musical instrument.
  - d. Walking in the forest.
  - e. Spending time with family and friends.
- 3. WHAT DO PEOPLE SAY ABOUT YOU?**
  - a. I like caring for others.
  - b. I'm normal; I don't rock the boat.
  - c. There's a rumour going around that I'm a bit strange.
  - d. I like animals, especially cats.
  - e. Everyone likes me.



# Conclusion, ground floor

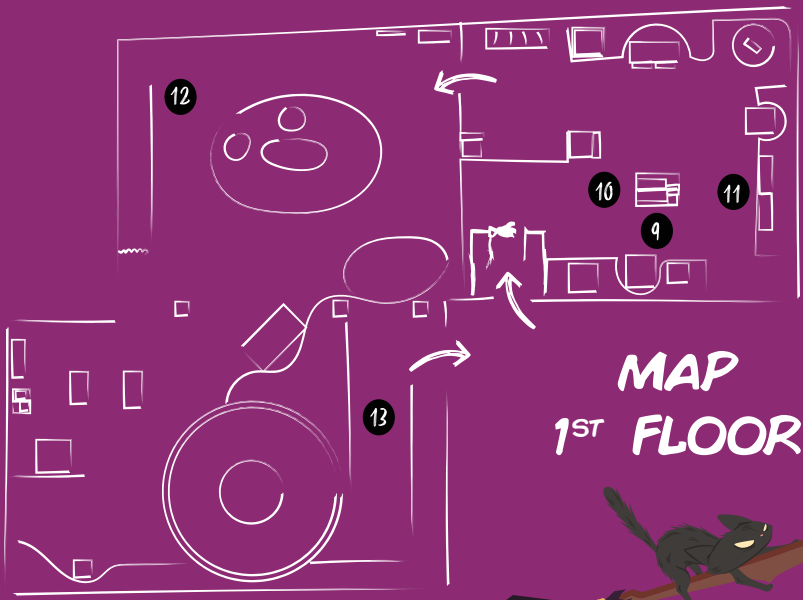
Fortunately, witch hunts came to an end in the late 18<sup>th</sup> century. Thinkers who promoted reason, knowledge, science, and philosophy began to transform society, putting an end to superstitions, fears and the persecution of witches.



BUT THE HISTORY OF WITCHES DOESN'T END THERE!

Let's go up one floor to explore the rest of the exhibition. We will discover a host of objects with supposed magical powers, we'll see how the figure of the witch has risen in popular culture, and we will learn if there are still witches today!

Hop on your broom and let's fly up to see the rest of the exhibition!



## 9. Magical accessories?

OPEN YOUR EYES  
AND YOUR MIND.  
THERE'S SO MUCH  
TO SEE AND  
DISCOVER!

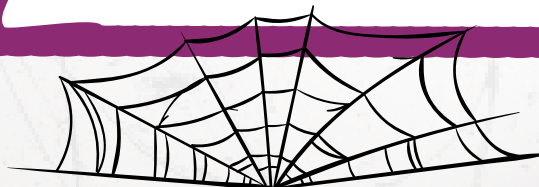
Witchcraft often features the use of accessories and rituals that supposedly have magical powers. It is believed that these objects can be used to cast spells, predict the future, protect, and heal. Look around and have a look at all these objects that are said to have various powers and that attest to magical practices.

P.S., DIVINATION IS THE ART OF PREDICTING THE FUTURE, OR "DIVINING" THAT WHICH IS HIDDEN. SPELL-CASTING, OR BEWITCHING, IS THE USE OF A MAGICAL OBJECT TO TAKE ACTION ON A LIVING BEING.

Match two accessories that are said to possess each type of magical power.

- |                        |                  |
|------------------------|------------------|
| <b>HEALING</b> •       | • Statuette      |
|                        | • Ring           |
| <b>DIVINATION</b> •    | • Amulets        |
|                        | • Adder stone    |
| <b>PROTECTION</b> •    | • Hen's egg      |
|                        | • Witch's mirror |
| <b>SPELL-CASTING</b> • | • Black slug     |
|                        | • Tarot          |

MEOW

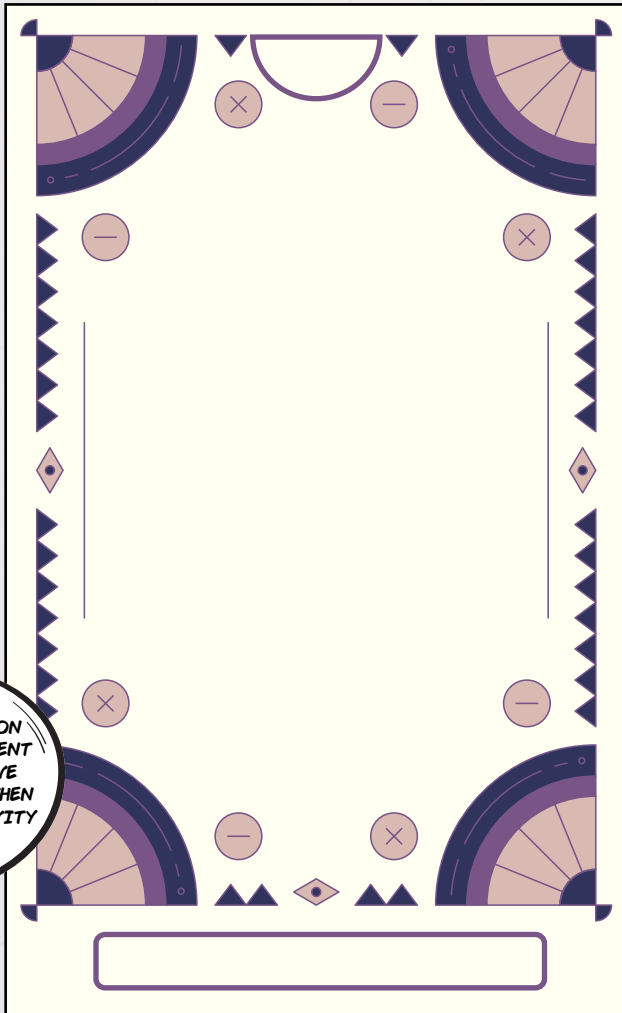


## 10. Tarot

Have a look at the different tarot decks.

On each card you can see various symbols. The cards and symbols can be interpreted to predict the future. The various styles and motives also feature very different and creative aesthetics from one tarot deck to the next.

Now it's your turn to be creative and draw your own tarot card.



TAKE INSPIRATION  
FROM THE DIFFERENT  
MOTIFS YOU HAVE  
SEEN HERE AND THEN  
LET YOUR CREATIVITY  
TAKE FLIGHT!



## 11. Amulets

Just look at all these different amulets. They look like the one I'm wearing around my neck! Check it out! These kinds of individual protective objects are found from prehistory right up to the present day. Their powers are activated in different ways depending on belief, shape, material, or actions and words. They all have different uses.



MEOOWW



### LOOK AND FIND!

How many amulets do you see that protect against the evil eye?

What is the name of the Japanese amulet symbolizing good luck?

Among the stones depicting a protective animal totem, name one animal.

## 12. Witches on the screen



The image of the witch on TV and in the movies has changed a lot over time. We've seen the figure change from evil old hag to young mischievous witch to rebellious, independent witch.

Complete the following sentence to see how witches have evolved.

"There are the witch \_\_\_\_\_, like those in the *Harry Potter* saga; the \_\_\_\_\_ witch from fairy tales like *Maleficent*; the \_\_\_\_\_, \_\_\_\_\_ witch, like in *Hocus Pocus*; the \_\_\_\_\_, \_\_\_\_\_ as seen in the film *The Witches of Eastwick*; and the \_\_\_\_\_, \_\_\_\_\_ witch, such as in the television series *Bewitched*."

# 13. Modern witches

The figure of the witch as changed a lot since the 1950s, and many women are reconnecting with it. The witch is associated with spirituality, nature, female power, feminism, and strength.

And yet words like “magic” and “witchcraft” were only recently removed from the Criminal Code (a Canadian law that lists most of the acts deemed criminal in Canada).



DO YOU KNOW IN WHAT YEAR THESE TERMS WERE REMOVED FROM THE CRIMINAL CODE?

Crack this code to discover the year.

	0	1	2
	3	4	5
	6	7	8
	9	10	11



# Solutions

2. Witches through time

2 - 4 - 1 - 3

3. The spread of witch hunting



4. Protection against magic and witchcraft



5. The powers of witches

- > Flying on a broom
- > Unleashing natural elements such as fire, rain, and hail
- > Transforming into animals

6. Witches at your service

Z	R	Y	O	A	B	R	A	P	N	M	O	M	R	I	R
Z	J	P	K	X	I	R	H	G	L	I	S	S	E		
S	B						F	C	W	M	H	S	L		
B	N												T	H	
N	K	F	V	Y	M	Z									
W							R	E	K	E	B	W			
X	H	L	K												
N	M	I	O				E	D	X						
P	F	H					I	N	Z	E	P				
D	X						Y	X	Z						
A													C	A	
T	B	E	L	L	Y										
K	F	C	O	R	T	I									
M	O	E													
R															

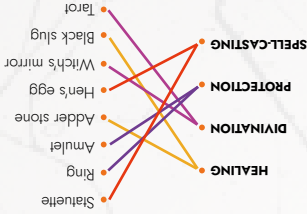
7. A witch's bestiary



8. Who were these witches?

If you have mostly B's and E's, you would not have been suspected of witchcraft.  
If you have mostly A's, C's, and D's, you would have been suspected of being a witch or wizard.

9. Magical accessories?



11. Amulets


- > 8, 2 from Greece, 1 from Turkey, and 5 from Italy
- > Fukusuke
- > Turtle, bird (eagle), orca, dolphin, or fish

12. Witches on the screen


magicians, evil, fendish, vengeful, victim, lively, impulsive

13. Modern witches





THAT WAS QUITE  
AN ADVENTURE INTO THE  
MYSTERIOUS AND MAGICAL  
WORLD OF WITCHES!



At the start of our tour, I asked you what a witch was for you.  
Has your perception changed since then?  
Would your answer be the same now?  
Were you surprised by what you learned in the exhibition?

I hope you learned a lot about witches on this tour and that it piqued  
your curiosity. There's so much more to discover!

See you next time for more adventures at Pointe-à-Callière!

MEOOWW



POINTE-À-CALLIÈRE  
Montréal Archaeology  
and History Complex